

# Staying Covid safe in school

Summary of changes to the school day

- Split lunches and break
- One way systems
- Hand sanitiser stations
- Classroom layouts
- General behaviours to stay safe



# Staying Covid safe in school

## Split lunches and breaks:

The school day has changed slightly so that year groups can remain as a 'bubble' as much as possible.

### Years 7 and 8

Tutor time	Lesson 1	Break	Lesson 2	Lesson 3	Lunch	Lesson 4	Lesson 5	End of day
08:30	08:50	09:50	10:20	11:20	12:20	13:00	14:00	15:00

### Years 9, 10 and 11

Tutor time	Lesson 1	Lesson 2	Break	Lesson 3	Lesson 4	Lunch	Lesson 5	End of day
08:30	08:50	09:50	10:50	11:20	12:20	13:20	14:00	15:00

# Staying Covid safe in school

## **Split lunches and breaks:**

Year 11 will be over at Beechurst

Years 7 and 9 will use area 1

Year 8 and 10 will use area 2

This will ensure the mixing of year group bubbles is minimized significantly.



# Staying Covid safe in school

## Split lunches and breaks:

Year 11 will have use of the both food outlets in the playground. Beechurst playground, Beechurst Foyer and the area outside B16 will be available to social in. There are lines marking the limits of this space to ensure lessons can go on with minimum distraction. During exam season, the PAC will be open instead.

The path between Beechurst playground past the mobiles down to B16 is a non-waiting area.



# Staying Covid safe in school

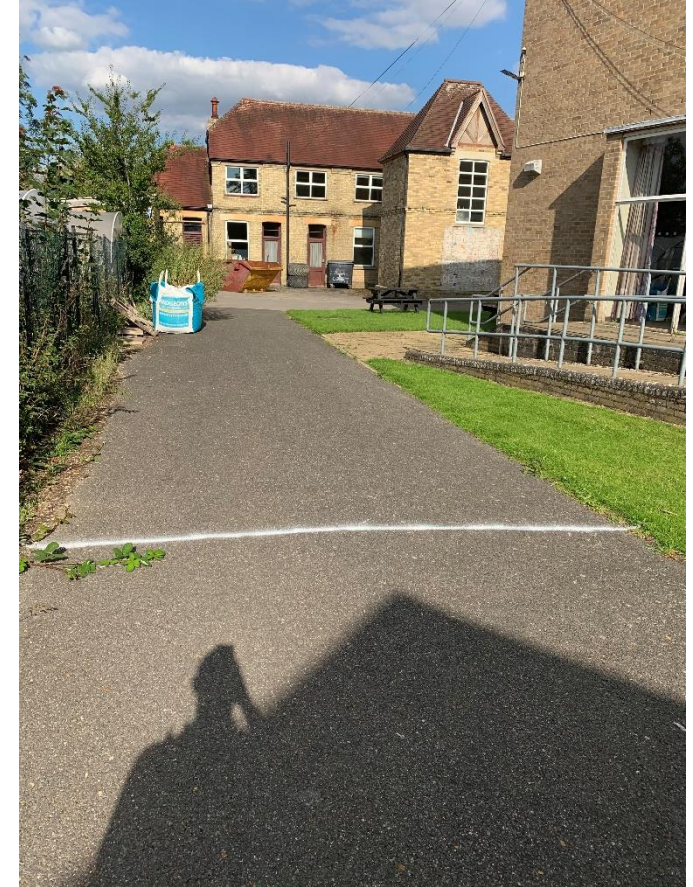
**Area 1:** Food at Lodeside walk through server. Lodeside hall and playground – Use the right hand doors to go in and out of. The area outside is marked with lines on the ground

**Area 2:** Canteen, outside area of the canteen on the astro turf, the playground by the tennis courts, round the side up to the doors at the back of Lodeside by L2 (Mrs Knights room).





# Staying Covid safe in school





# Staying Covid safe in school

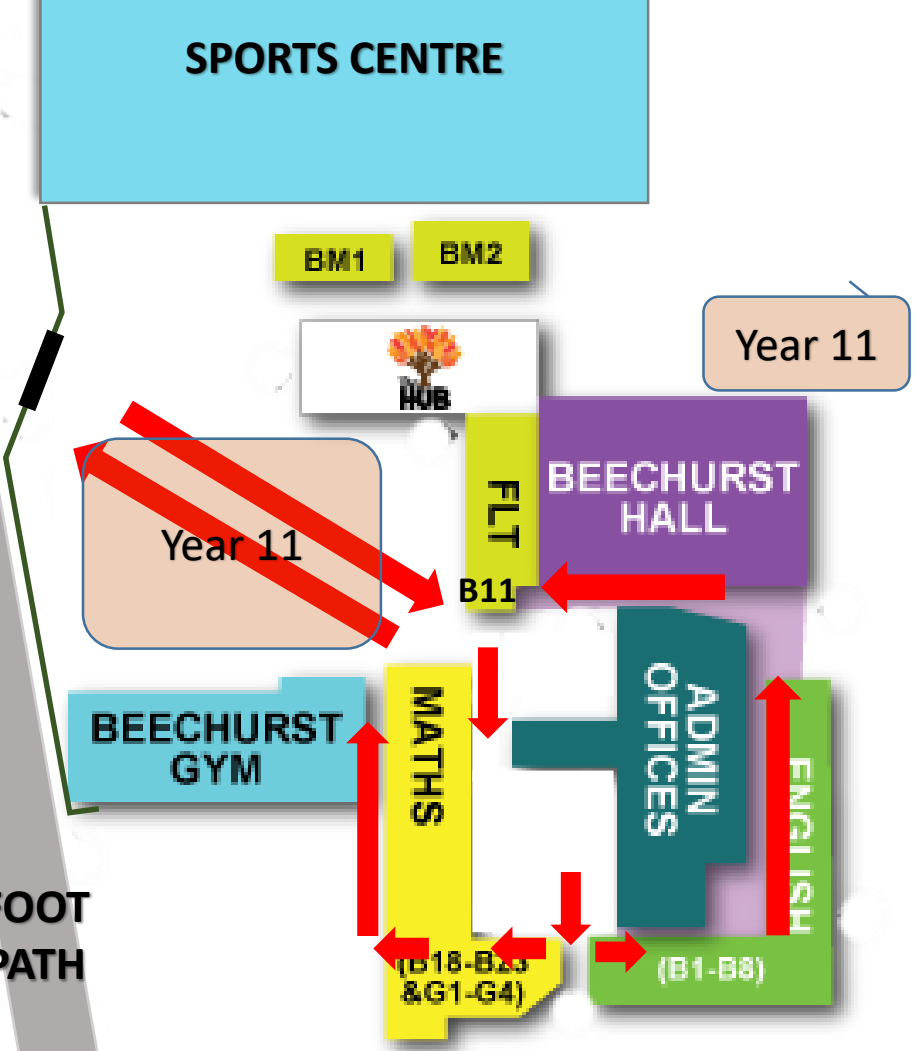




# Staying Covid safe in school







At lesson change over, the start of break and lunch and any other busy times, there is a one-way system in place in some areas of the school for the safety of everyone.

# Staying Covid safe in school



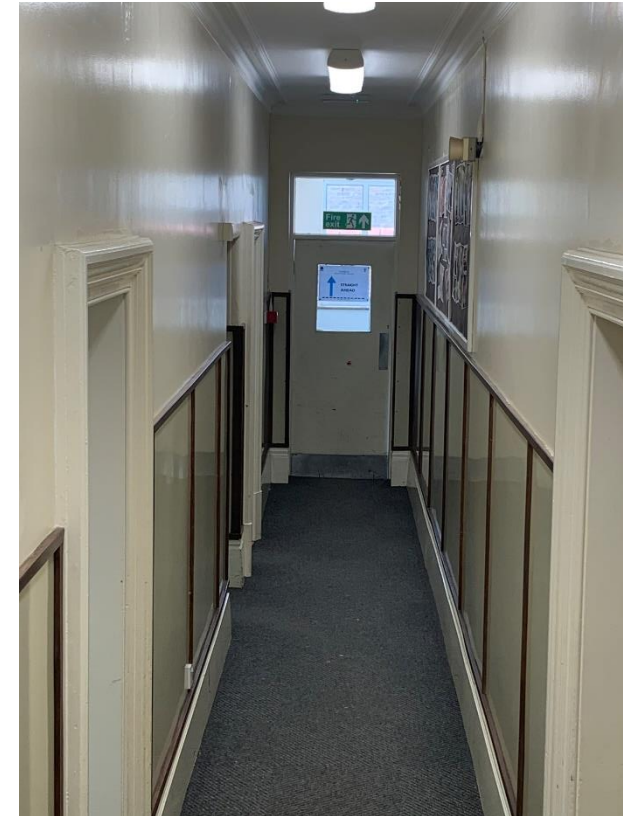


# Staying Covid safe in school



# Staying Covid safe in school

POSITIVITY  
RESPONSIBILITY  
INTEGRITY  
DRIVE  
EMPATHY





# Staying Covid safe in school

POSITIVITY  
RESPONSIBILITY  
INTEGRITY  
DRIVE  
EMPATHY



# Staying Covid safe in school

All social areas will be cleaned in the 30 minutes between uses by the year groups using them

No other inside areas are open during social times as classes will be going on and our corridors are small and make social distancing difficult

There will be enhanced cleaning in toilets to keep them safe





# Staying Covid safe in school

There will be one way systems in place during lesson change overs and social time:

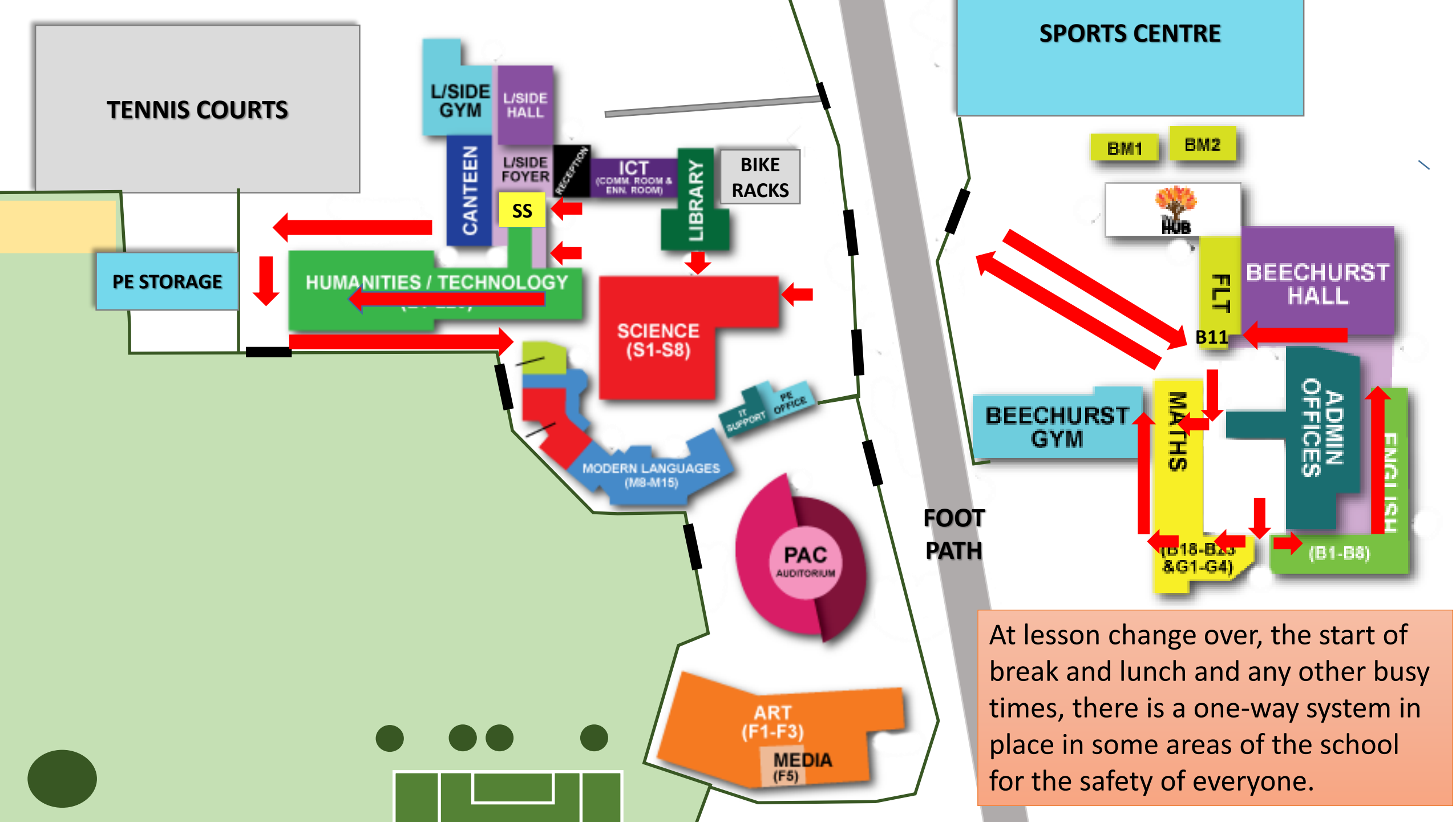
Beechurst - the only way in is through the double doors opposite B11. Exits are through G block, B18, the stairs by B5 and Beechurst foyer (past B6).

Lodeside corridor will be one way going from Beechurst side down towards technology

Science will be in through the double doors and exit through the second door

MFL continues to be one way in through the main double doors and out by M6







# Staying Covid safe in school



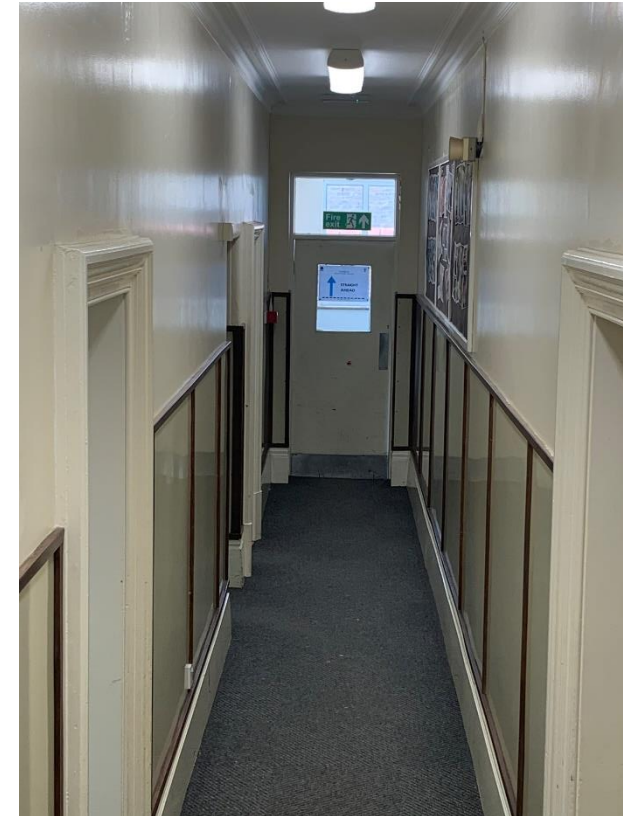
# Staying Covid safe in school





# Staying Covid safe in school

POSITIVITY  
RESPONSIBILITY  
INTEGRITY  
DRIVE  
EMPATHY





# Staying Covid safe in school

POSITIVITY  
RESPONSIBILITY  
INTEGRITY  
DRIVE  
EMPATHY



# Staying Covid safe in school

Where possible, classrooms will all face forward and teachers will be a 2m distance away. This is because we know reducing time spent face to face lessens the chance of spreading the virus. Keeping to your seating plans is essential in case track and trace are required.



# Staying Covid safe in school

There are hand sanitizer stations around school. These are for your safety and those around you. Use them sensibly when necessary





# Staying Covid safe in school

## General behaviours to stay safe

Covid is most likely to spread by droplets in the air being inhaled or by touching a surface with enough of the virus on it

- Regularly sanitize your hands (washing them with soap for 20 seconds or use hand sanitizer)
- Try to maintain a 2m distance where possible, when this is not possible, try to avoid facing each other or shouting.
- If you feel more comfortable with a face mask, wear one
- Bring all your own stationary so you don't need to borrow anything
- Follow the one-way systems
- Be prompt in and out of lessons to minimize wait time and potential for bubble mixing
- Don't share food or drinks with friends
- Don't drop litter – anything you've touched could spread it if you have it



